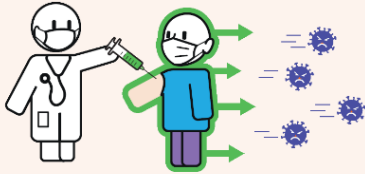


Covid Vaccinw – Kunnaföli nafamaw

2021 Marsi kalo tele 25

K'ika vaccin tä: o körö ye k'i yèrè tanga



Vaccinw ni tché, I fari besse ka Covid dö ani k'a yèrè tanga.



Nafaba lebe Covid vaccinw la, ou besse ka mögö tanga ka bö Covid-19 sougou djougou chaman ma.

Mögö shi te wari te sarala vaccin ko niniw.



I besse kata i vacciné fan djumè?

I besse kata I vacciné yörö niniw la:

- **Vaccin centri** könön
 800 009 110  vw.santé.fr
- ika **dokötörö fè, pharmacie** mi **b'ika quartier la** walima aw ka **dökötöröso la**
- **Ika bo** könön naya sörö ibe dökötöröso dela



Gninigali dö b'i fè wa?

I besse ka dökötöröso baarakèla dö gniniga, ka adamaya baarakèla dö gniniga, ika *n*

Walima ibe yan flé



N'i bafè k'I vacciné:

0 800 009 110

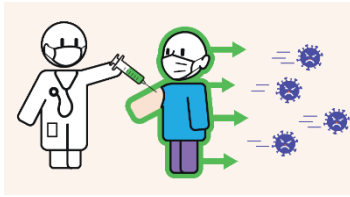
(toll-free)

walima on yan

Santé.fr



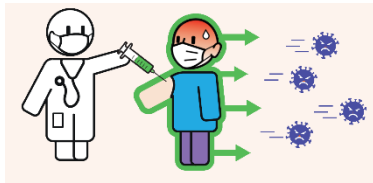
N'i bana dö bè n'na (inafö diyabèti, cancèri walima bana mi sougou mancha), m'besse kata vacciné wa?



✓ Awö

N'i bana dö b'i la, i kakan kata vacciné bawö Covid-19 sougou djougou dö besse k'i minè djona ani sougou dö besse k'i minè mi besse ka mögö fäghä. Vaccin bena i dèmè ka virusi kèlè.

N'i Covid-19 ye ne minè kaban, m'besse kata vacciné wa?



✓ Awö

Hali ni Covid-19 y'i minè kaban, I kakan kata vacciné. I besse ka o kè naya söro bana b'I kan ka daminè kalo saba kata kalo wörö, ibe dose kele dörön ne tälà (ikana dose fla tä dèh).

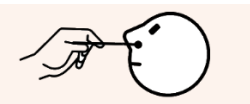
N'i ye nka vaccinasson kè kaban, m'besse ka segui tiogo körö ani ka maski don dabra wa?



✗ Ayi

Hali naya söro y'ika vaccinasson kè kaban, I kakan kato ka maski don ani ka tangali chariya la tagama han kata sigui n'ou ban'na diamana mögöw bèè vaccinela.

N'i ye nka vaccinasson kè kaban, m'besse kata voyagi la nögyöya la wa?



✗ Ayi

Hali naya söro y'ika vaccinasson kè kaban, I kakan ka PCR test kè ka èr 72 to ika voyagi la, han kata sigui n'ou ban'na diamana mögöw bèè vaccinela. Wari foshi te sarala test ni na ani ate i dimina. I Kakan ka diamana bè chariya maflè sani i kata voyage la.